

GPS CONTROL POINTS

**HVCTRL #1**

DESIGNATION

"VT/NH BRM 78"

\*\* N = 892289.6500  
E = 1892838.4500  
ELEV. = 1021.0900

GENERAL LOCATION, CANAAN, VT. OWNERSHIP, BILL JOHNSON, 3603 VT ROUTE 102, CANAAN, VT 05903. TO REACH FROM THE INTERSECTION OF VT ROUTES 114, 102, AND 253 GO SOUTHWEST ALONG VT ROUTE 102 FOR 4.3 MI TO THE INTERSECTION OF A FIELD DRIVE LEFT, JUST NORTH OF HOUSE NO 2566. PARK VEHICLE AND WALK EAST ALONG THE FIELD DRIVE FOR ABOUT 120 M TO THE SITE OF THE MARK AT THE SOUTH EDGE OF A LARGE FIELD. THE MARK IS A 12.5 CM DIAMETER UNITED STATES SUPREME COURT REFERENCE MARK DISK SET IN THE TOP OF A 30 CM SQUARE GRANITE MONUMENT WHICH PROJECTS 50 CM ABOVE GROUND SURFACE. IT IS 19.2 M WEST NORTHWEST OF A 30 CM ELM, 23.9 M EAST OF A 25 CM WHITE BIRCH, 7.4 M NORTH NORTHWEST OF THE TOP OF A SMALL BANK, 38.0 M SOUTHEAST OF A CLUMP OF FOUR 15 CM BIRCHES, AND 0.3 M NORTH OF A FIBERGLASS WITNESS POST.

**HVCTRL #2**

DESIGNATION

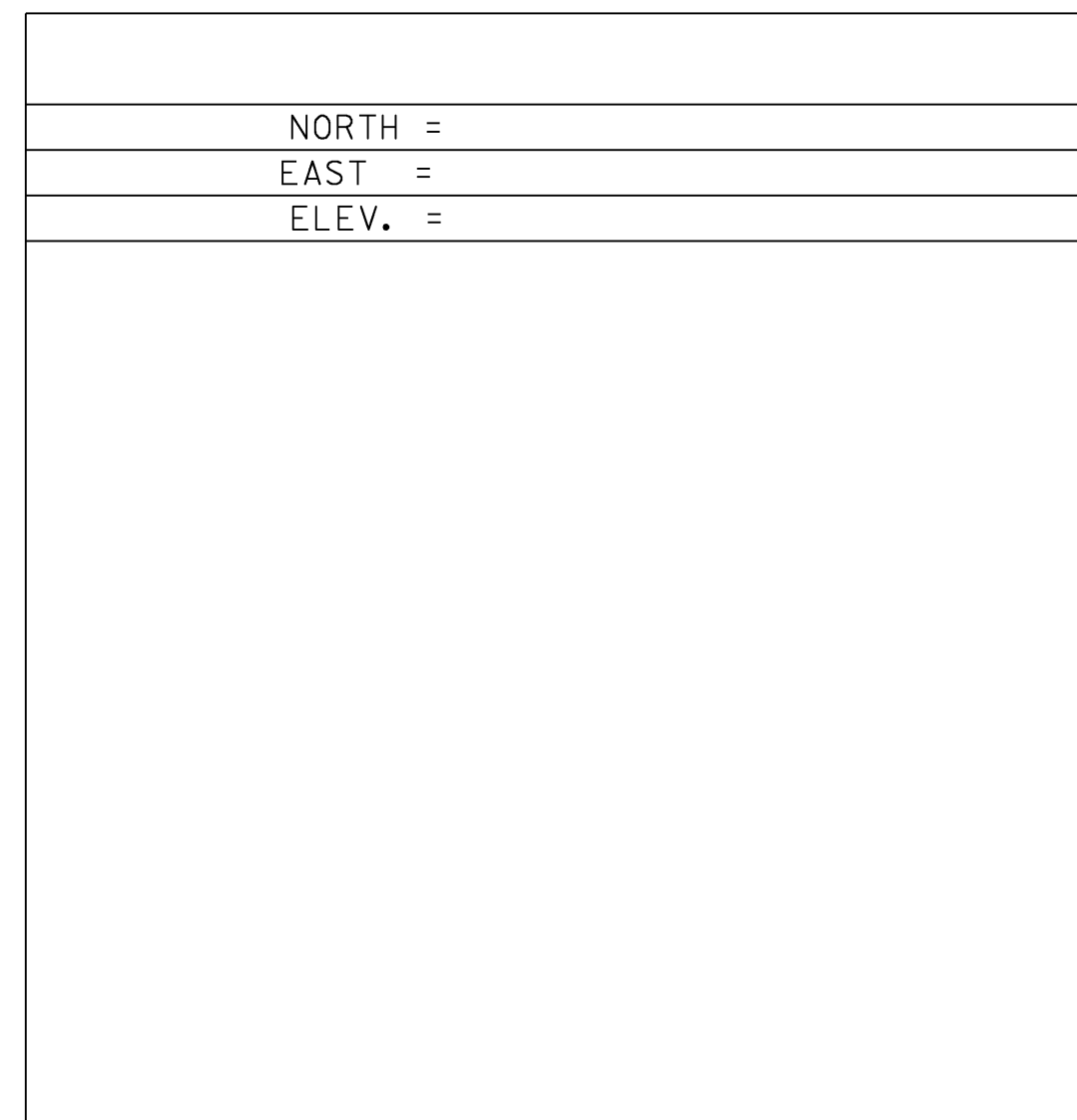
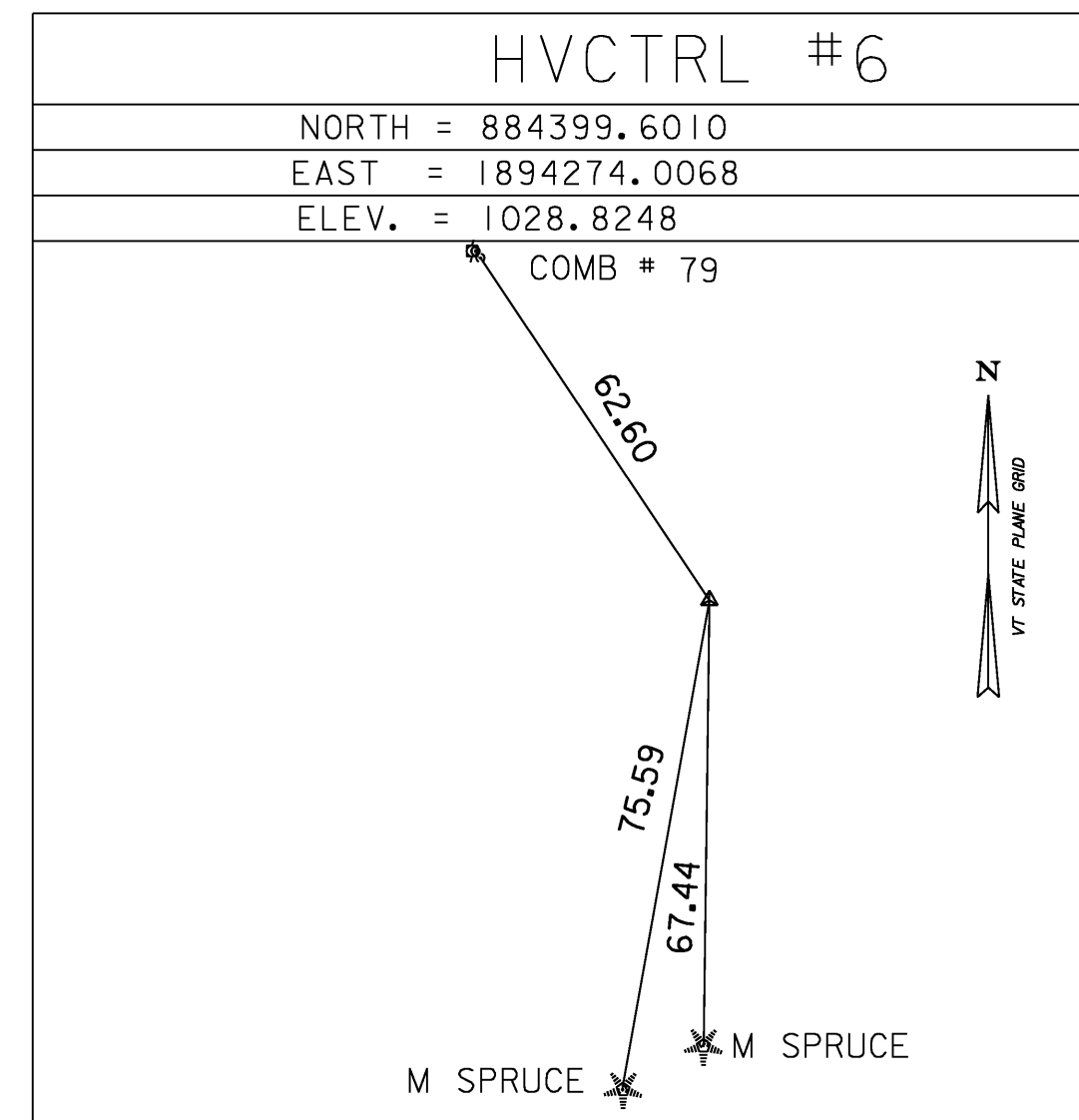
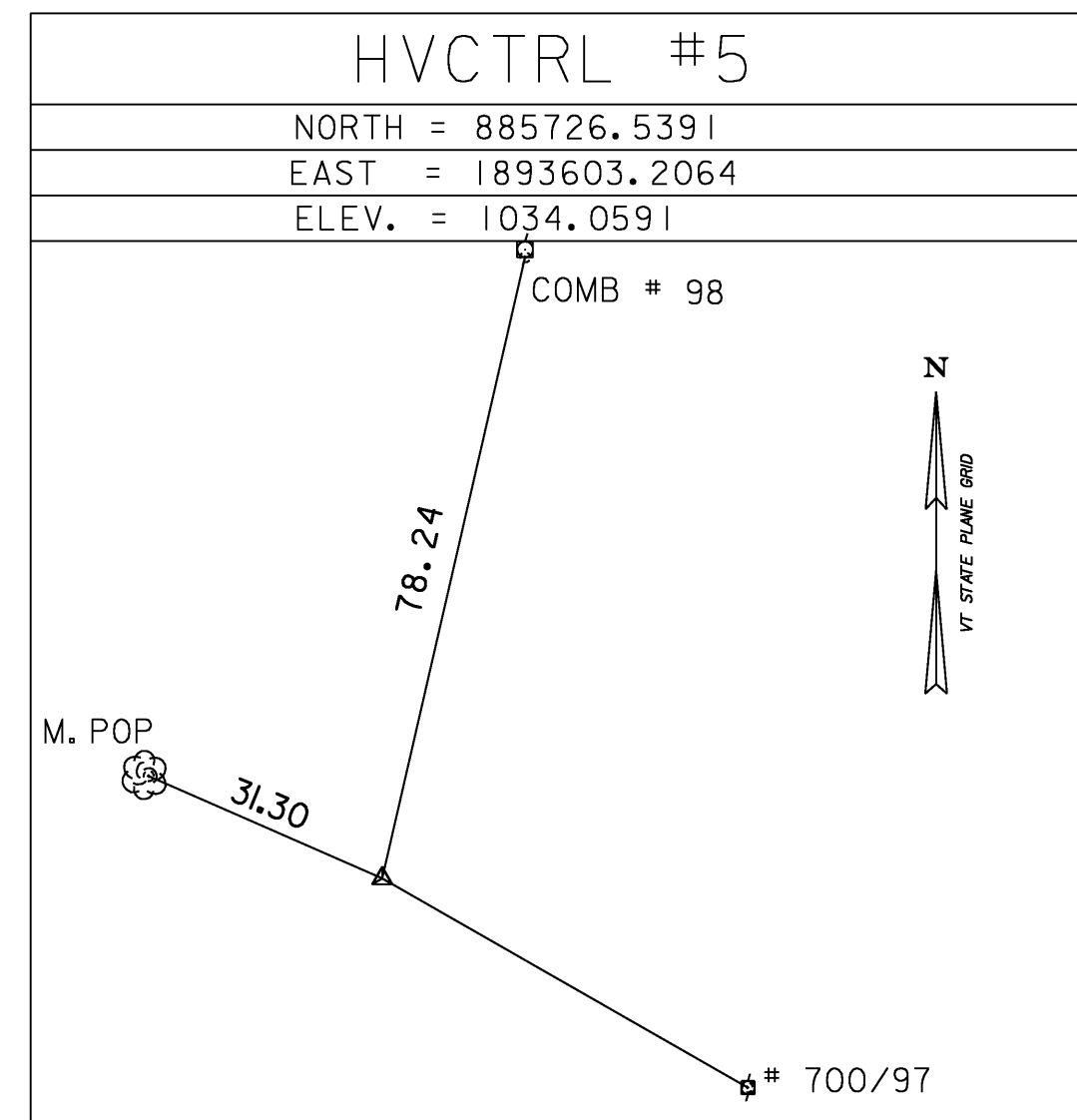
"VT/NH BRM 77"

\*\* N = 890752.1900  
E = 1893251.0900  
ELEV. = 1022.7000

GENERAL LOCATION, CANAAN, VT. OWNERSHIP, BILL JOHNSON, 3603 VT ROUTE 102, CANAAN, VT 05903. TO REACH FROM THE INTERSECTION OF VT ROUTES 114, 102, AND 253 GO SOUTHWEST ALONG VT ROUTE 102 FOR 4.6 MI TO A LARGE WHITE FARM HOUSE ON THE RIGHT AND AN L-SHAPED BARN ON THE LEFT. PARK VEHICLE AND WALK EAST FOR ABOUT 150 M TO THE SITE OF THE MARK AT THE NORTH EDGE OF A LARGE FIELD. THE MARK IS A 12.5 CM DIAMETER UNITED STATES SUPREME COURT REFERENCE MARK DISK SET IN THE TOP OF A 30 CM SQUARE GRANITE MONUMENT WHICH PROJECTS 40 CM ABOVE GROUND SURFACE. IT IS ABOUT ON AN EAST BEARING WITH THE HOUSE. IT IS ABOUT 95 M EAST SOUTHEAST OF THE SOUTHEAST CORNER OF A FALLING DOWN BARN ELL, 18.0 M SOUTH OF THE NORTH EDGE OF A STEEP EMBANKMENT, AND 0.3 M SOUTHEAST OF A FIBERGLASS WITNESS POST.

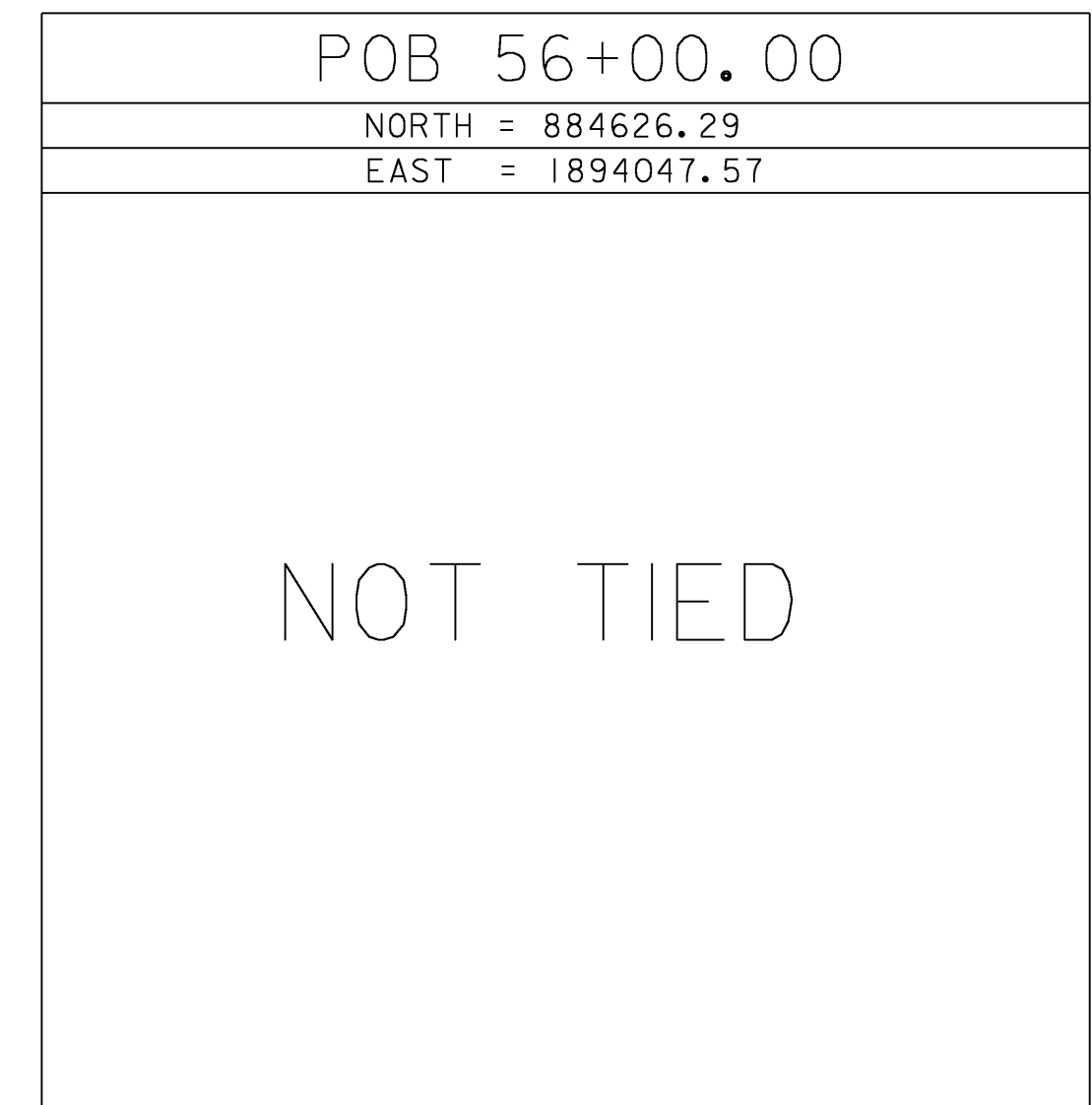
\* DESCRIPTION PROVIDED BY VERMONT AGENCY OF TRANSPORTATION GEODETIC SURVEY UNIT

TRAVERSE TIES

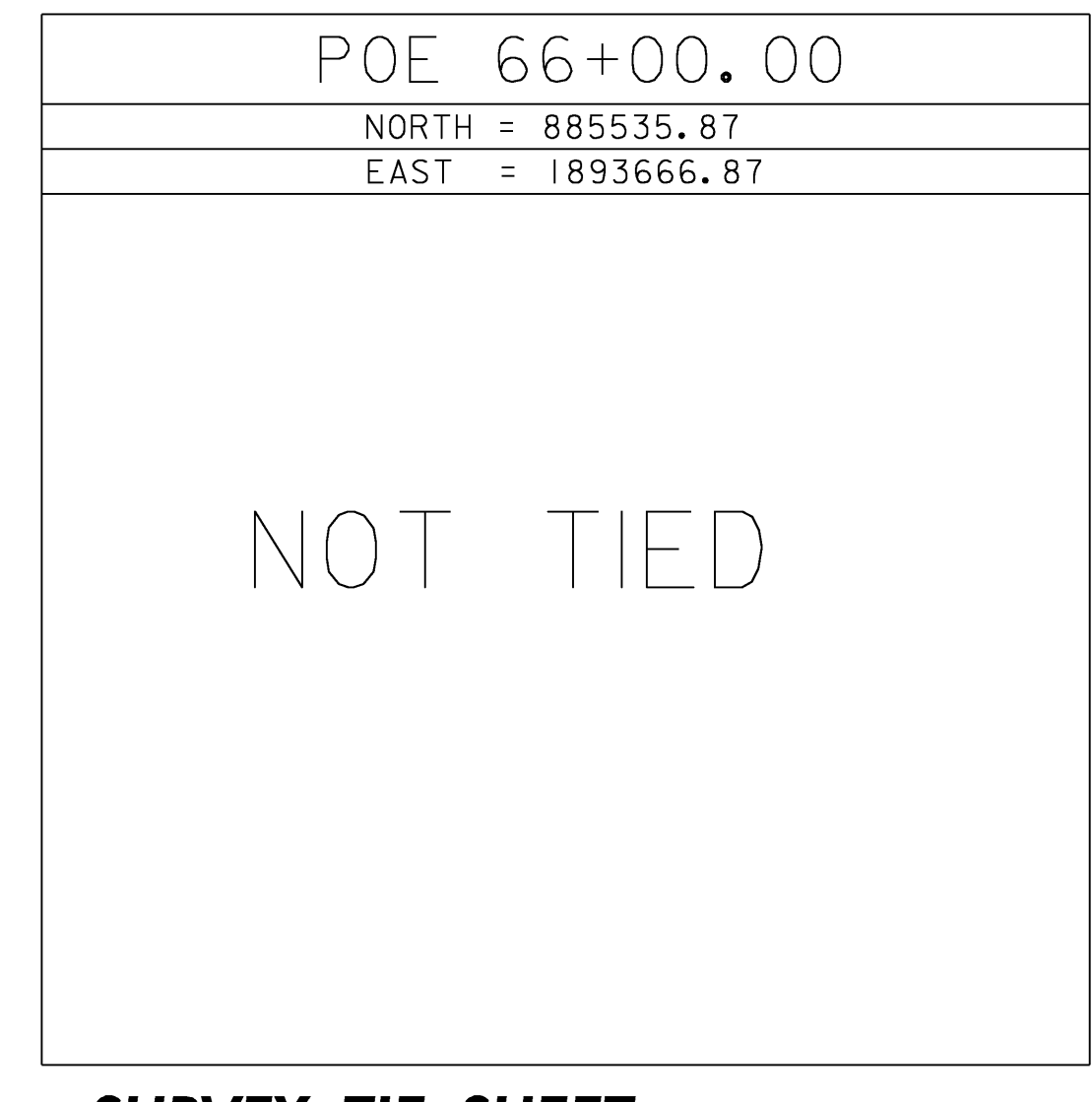
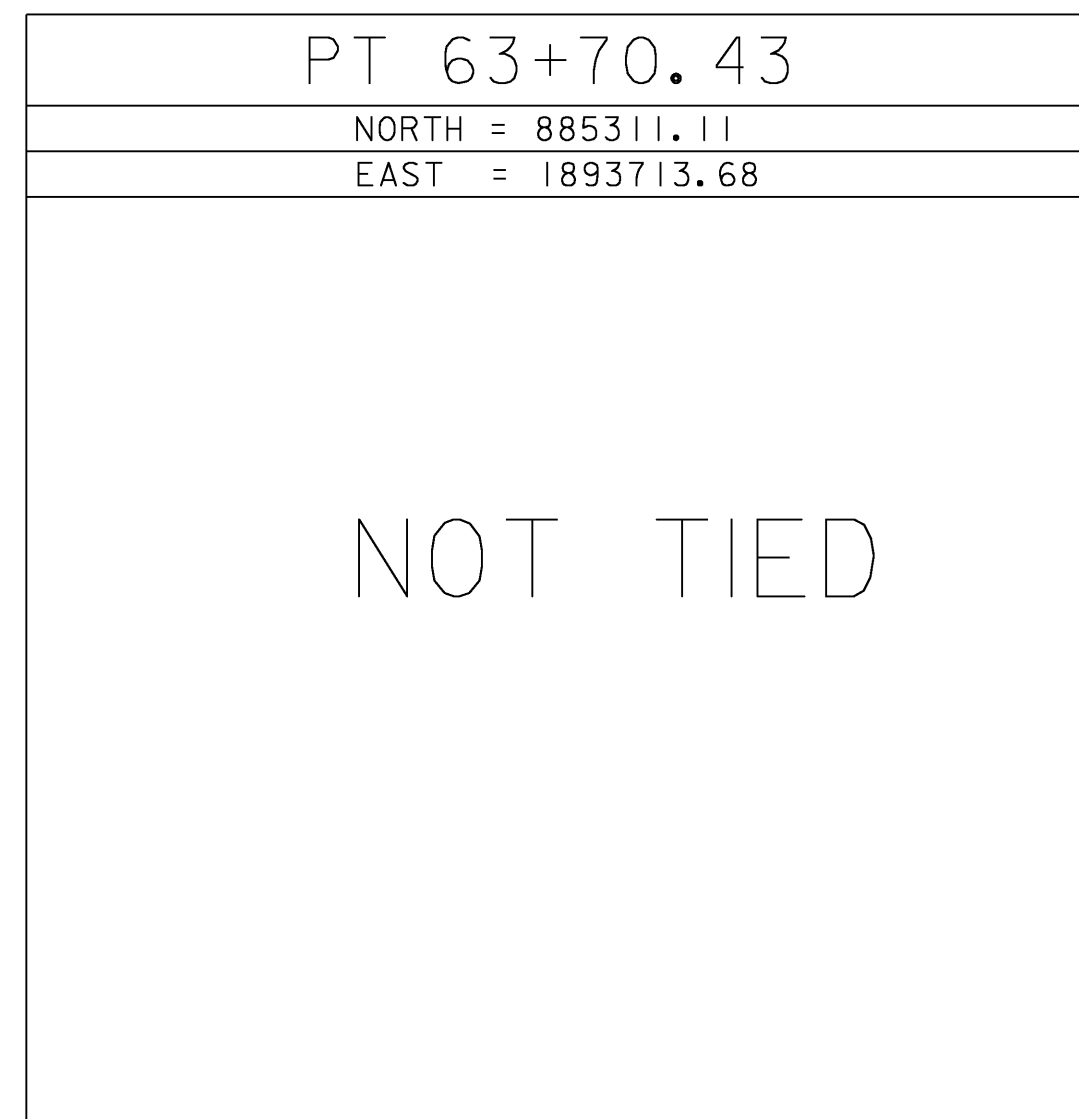
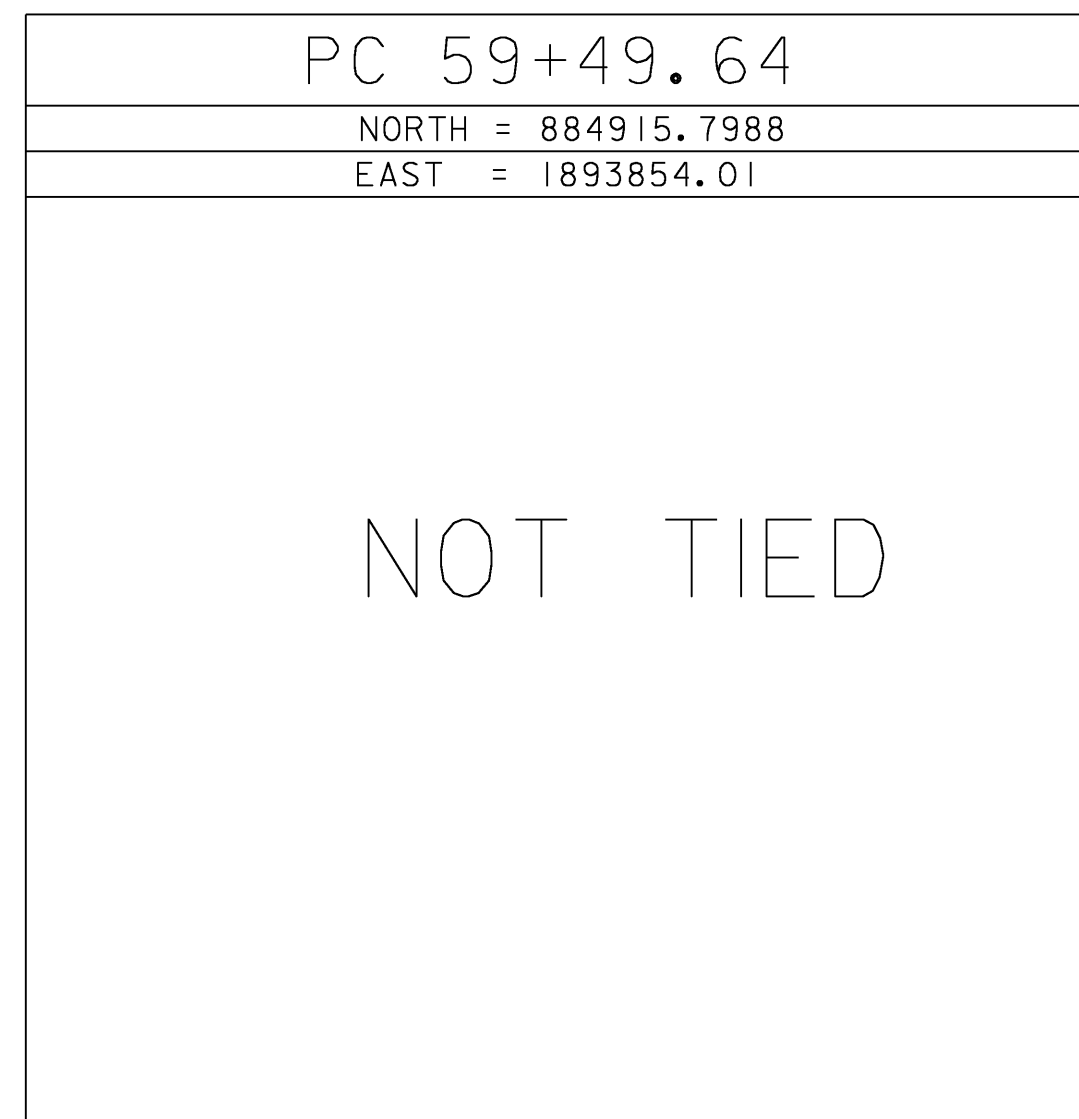
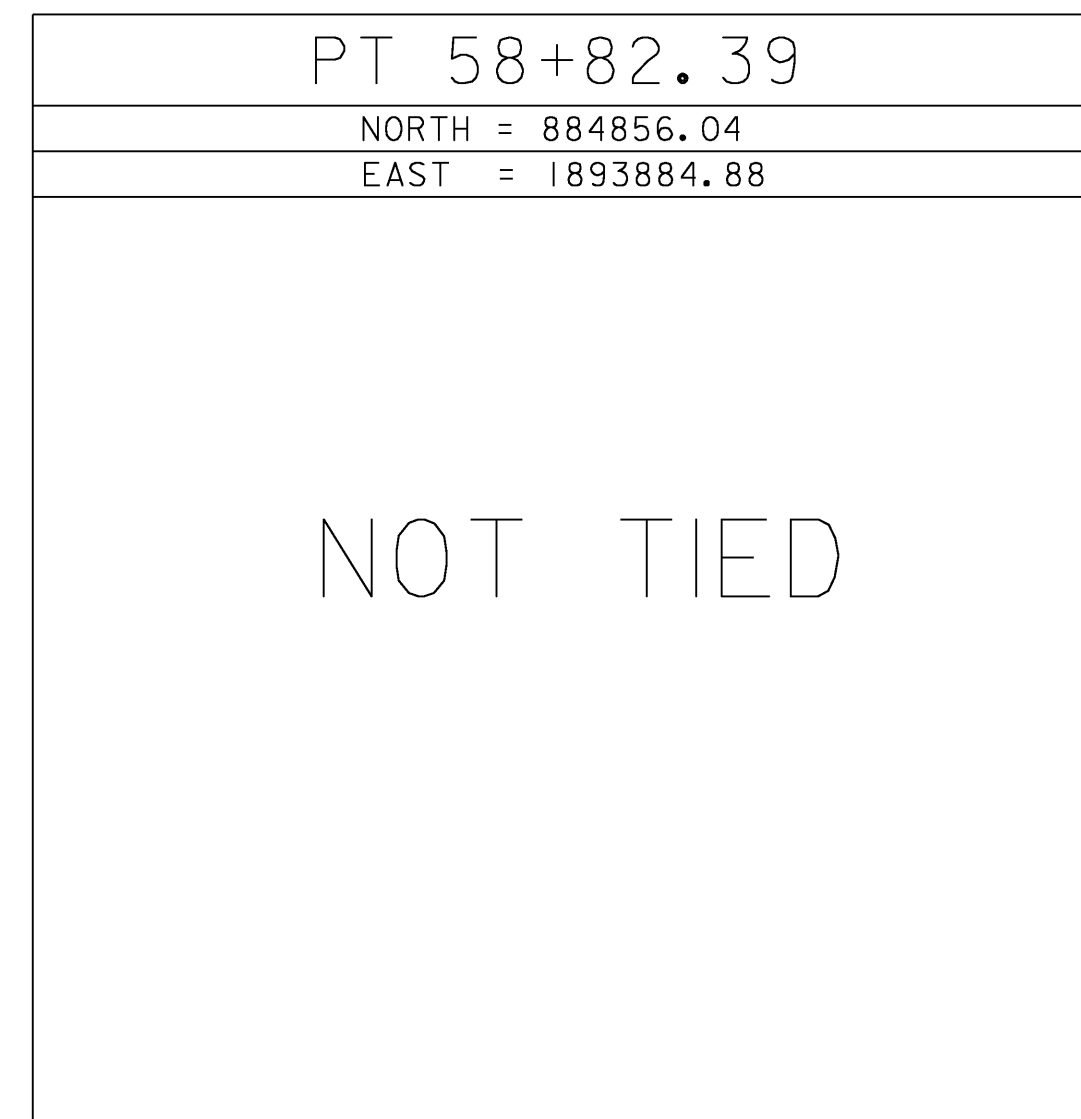
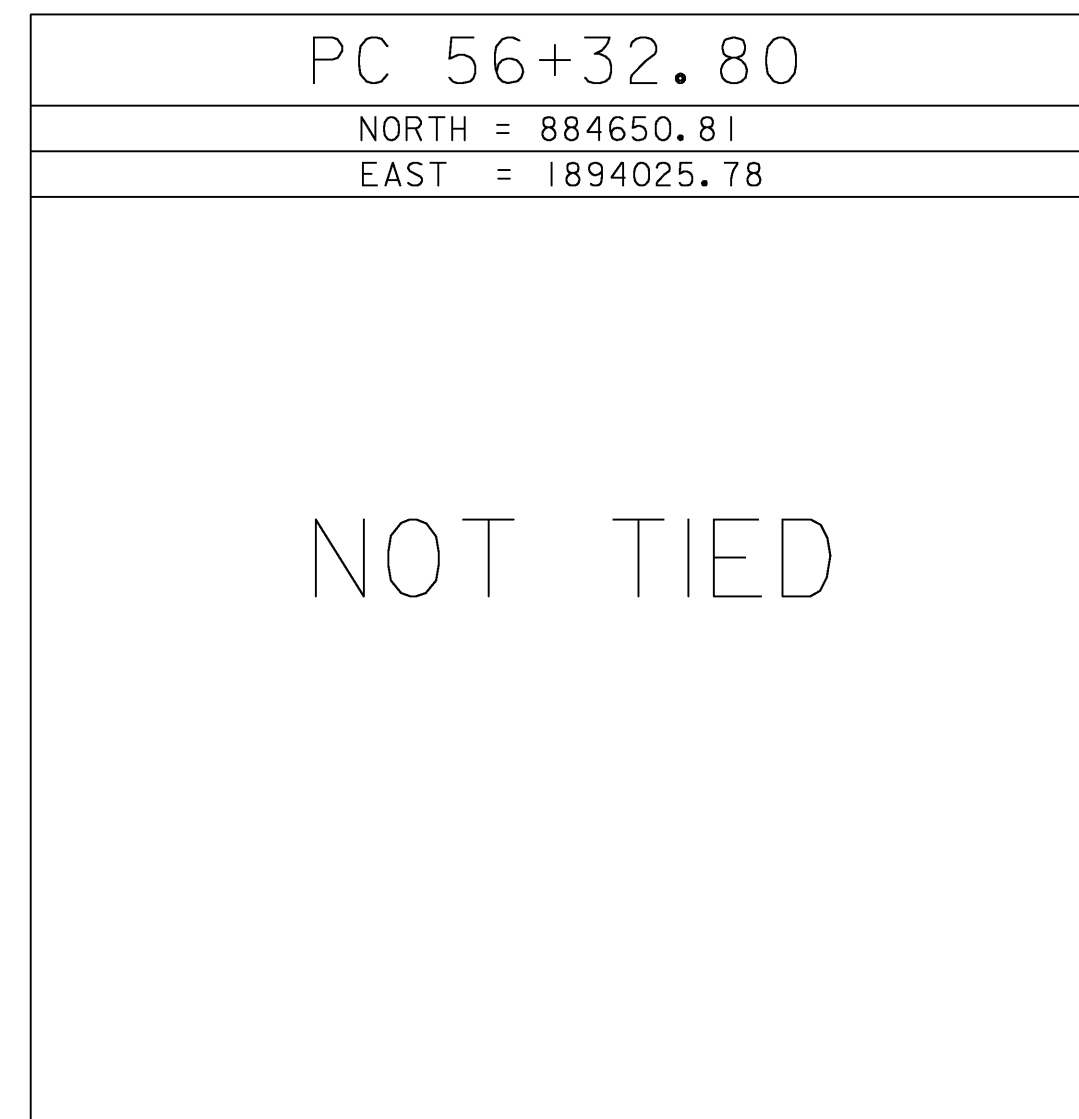


\* MAIN TRAVERSE COMPLETED: AUGUST 11, 2004 BY R. GILMAN PC, P. WINTERS

ALIGNMENT TIES



ALIGNMENT TIES



\* Alignment as of 12/7/06

DATUM	
VERTICAL	NAVD 88
HORIZONTAL	NAD 83(96)
ADJUSTMENT	COMPASS

**SURVEY TIE SHEET**

PROJECT NAME:	CANAAN	PLOT DATE:	18-AUG-2008
PROJECT NUMBER:	ER ST 027(16)	DRAWN BY:	J.HULETT
FILE NAME:	04c098\struc\x04c098t1.dgn	CHECKED BY:	P.HODGE
PROJECT LEADER:	M. EVANS-MONGEON	SHEET	II
DESIGNED BY:	S. SCRIBNER	OF	66